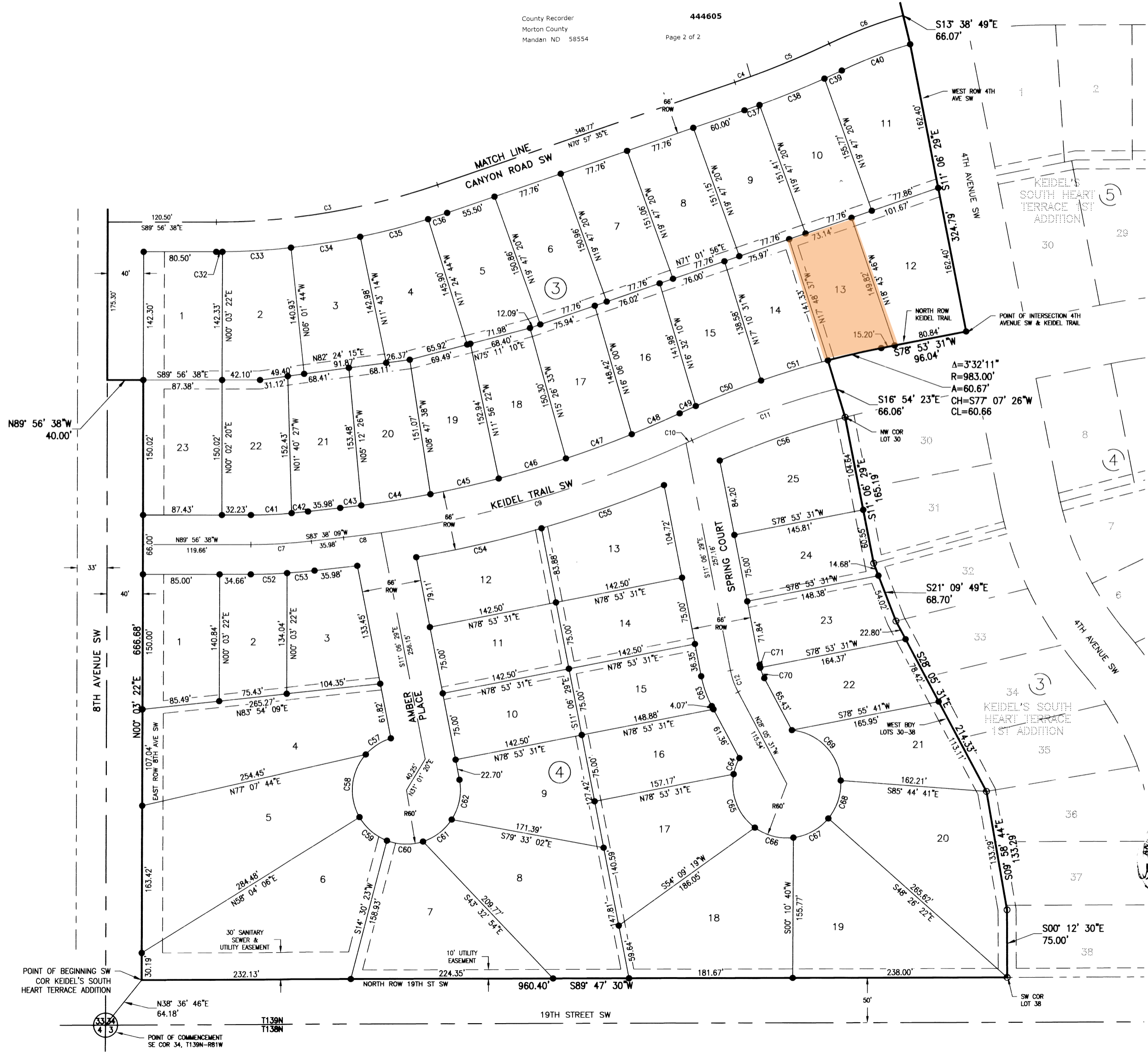


KEIDEL'S SOUTH HEART TERRACE SECOND ADDITION

TO THE CITY OF MANDAN, NORTH DAKOTA

BEING A REPLAT OF ALL OF BLOCKS 1 AND 2, LOTS 1-29 OF BLOCK 3, ALL OF KEIDEL CIRCLE, PART OF KEIDEL TRAIL, ALL WITHIN KEIDEL'S SOUTH HEART TERRACE 1ST ADDITION, AND PART OF THE SW1/4 OF SECTION 34, T139N-R81W, OF THE CITY OF MANDAN, MORTON COUNTY, NORTH DAKOTA

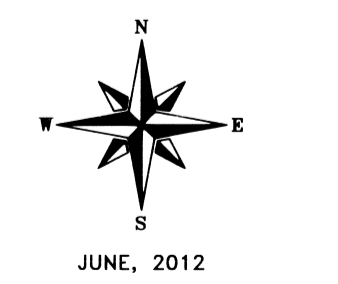
County Recorder
Morton County
Mandan ND 58554
444605
Page 2 of 2



CURVE #	DELTA	RADIUS	LENGTH	CHORD BEARING	CHORD LENGTH
C7	6°25'14"	600.00'	67.24'	S86° 50' 46"W	67.20'
C8	1°55'50"	1250.00'	42.12'	S82° 40' 14"W	42.11'
C9	16°12'42"	1250.00'	353.68'	S73° 35' 58"W	352.50'
C10	0°20'19"	1250.00'	7.39'	S65° 19' 28"W	7.39'
C11	10°16'45"	950.00'	170.44'	S70° 17' 41"W	170.21'
C12	16°59'03"	86.00'	25.49'	S19° 36' 00"E	25.40'

CURVE #	DELTA	RADIUS	LENGTH	CHORD BEARING	CHORD LENGTH
C32	0°30'14"	783.00'	6.89'	N89° 48' 15"E	6.89'
C33	5°34'52"	783.00'	76.27'	N86° 45' 42"E	76.24'
C34	5°41'30"	783.00'	77.78'	N81° 07' 31"E	77.75'
C35	5°41'30"	783.00'	77.78'	N75° 26' 01"E	77.75'
C36	1°37'41"	783.00'	22.25'	N71° 46' 25"E	22.25'
C37	0°59'06"	1033.00'	17.76'	N70° 28' 02"E	17.76'
C38	4°19'02"	1033.00'	77.84'	N67° 48' 58"E	77.82'
C39	1°10'47"	1033.00'	21.27'	N65° 04' 03"E	21.27'
C40	9°00'31"	517.00'	81.29'	N68° 58' 55"E	81.20'
C41	4°34'47"	567.00'	45.32'	S87° 45' 59"W	45.31'
C42	1°50'26"	567.00'	18.22'	S84° 33' 22"W	18.21'
C43	1°06'33"	1217.00'	23.56'	S83° 04' 52"W	23.56'
C44	3°39'31"	1217.00'	77.71'	S80° 41' 50"W	77.70'
C45	3°39'32"	1217.00'	77.72'	S77° 02' 18"W	77.71'
C46	3°39'41"	1217.00'	77.77'	S73° 22' 41"W	77.76'
C47	3°39'44"	1217.00'	77.79'	S69° 42' 58"W	77.78'
C48	2°43'48"	1217.00'	57.99'	S66° 31' 12"W	57.98'
C49	1°08'55"	982.99'	19.70'	S65° 43' 46"W	19.70'
C50	4°32'01"	982.99'	77.78'	S68° 34' 13"W	77.76'
C51	4°31'07"	982.99'	77.52'	S73° 05' 47"W	77.50'
C52	3°39'15"	633.00'	40.37'	S88° 13' 45"W	40.36'
C53	2°45'59"	633.00'	30.56'	S85° 01' 08"W	30.56'
C54	6°22'14"	1283.00'	142.65'	S76° 58' 23"W	142.58'
C55	6°26'05"	1283.00'	144.09'	S70° 34' 13"W	144.02'
C56	9°12'35"	917.00'	147.40'	S70° 54' 50"W	147.24'
C57	31°55'12"	60.00'	33.43'	S57° 11' 34"W	33.00'
C58	71°20'19"	60.00'	74.71'	S5° 33' 49"W	69.97'
C59	38°58'19"	60.00'	40.81'	S49° 35' 31"E	40.03'
C60	38°58'19"	60.00'	40.81'	S88° 33' 50"E	40.03'
C61	38°58'19"	60.00'	40.81'	N52° 27' 51"E	40.03'
C62	44°05'12"	60.00'	46.17'	N10° 56' 06"E	45.04'
C63	16°59'03"	119.00'	35.27'	S19° 36' 00"E	35.15'
C64	18°10'16"	60.00'	19.03'	S19° 27' 20"W	18.95'
C65	64°16'41"	60.00'	67.31'	S21° 46' 09"E	63.84'
C66	4°31'50"	60.00'	45.31'	S75° 32' 24"E	44.24'
C67	4°31'50"	60.00'	45.31'	N61° 11' 46"E	44.24'
C68	4°31'50"	60.00'	45.31'	N17° 55' 56"E	44.24'
C69	81°01'32"	60.00'	84.85'	N44° 12' 44"W	77.95'
C70	13°34'00"	53.00'	12.55'	S21° 18' 31"E	12.52'
C71	3°25'02"	53.00'	3.16'	S12° 49' 00"E	3.16'

LOT #	SQ FT	ACRES
BLOCK 3		
1	12435	0.29
2	11937	0.27
3	11972	0.27
4	12310	0.28
5	12012	0.28
6	11733	0.27
7	11741	0.27
8	11748	0.27
9	11757	0.27
10	11903	0.27
11	14381	0.33
12	14180	0.33
13	10784	0.25
14	10698	0.25
15	10723	0.25
16	11126	0.26
17	11485	0.26
18	11099	0.25
19	11193	0.26
20	11123	0.26
21	11168	0.26
22	11335	0.26
23	13113	0.30
BLOCK 4		
1	12361	0.28
2	10277	0.24
3	12134	0.28
4	24304	0.56
5	27625	0.63
6	27277	0.63
7	20121	0.46
8	23312	0.54
9	14423	0.33
10	10688	0.25
11	10688	0.25
12	11424	0.26
13	13244	0.30
14	10688	0.25
15	10770	0.25
16	11896	0.27
17	16410	0.38
18	23419	0.54
19	23944	0.55
20	22648	0.52
21	12399	0.28
22	12429	0.29
23	11657	0.27
24	10954	0.25
25	14059	0.32
STREETS	305106	7.00
TOTAL	1457592	33.46



- LEGEND
- FOUND PROPERTY CORNER
 - SET PROPERTY CORNER



TOMAN ENGINEERING
501 1st Street NW, Mandan, ND 58554
Phone: 701-663-6483 * Fax: 701-663-0923